

Experience Bendigo Outdoors

City Map

URBAN WILDLIFE

Throughout the year the different Box and Ironbark eucalypts provide nectar for a great variety of honeyeaters, numerous insects, and tree dwelling animals like the tuar, sugar glider and possums. These, in turn, are food for predators like owls and other birds of prey. All plants and animals are involved in an intricate web of life of which we are a part. Just like a spider's web, this web of life needs to remain in balance for it to function properly.

Apart from providing us with a quiet, restful and aesthetically pleasing setting for recreation experiences, the surrounding forests are also the homes of the many animals that depend upon the bush entirely for food and shelter: Tread carefully and these creatures will continue to grace us with their presence.

We humans are creatures of the day, dependent on light for almost everything we do. As we retreat indoors at night, the nocturnal creatures such as Possums, Bats and Water Rats take over.



Common Brushtail Possum © Lochman Transparencies

POSSUMS (BUNAR)

Some local parks have a resident population of Brushtail possums. Local residents may hear them prancing and dancing on their roof at night. Two species of possum live in and around Bendigo. They are the Common Brushtail Possum and the Common Ringtail Possum. The Brushtail possum has a thick bushy tail and is happy to make its home in residential areas. The Ringtail possum is much smaller and has a white tip at the end of its tail. Possums may be seen in the parks at night with a spotlight.

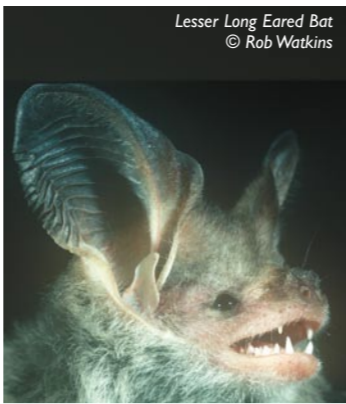


Galah © Ian Maittgomery birdway.com.au

THE GALAH (YAARAR)

The Galah is a large, familiar and distinctive cockatoo. It can be seen all throughout Bendigo's urban areas as well as the Parks and Forests. This bird is a very loud social bird that likes to roost in high branches at sunset (knock-er-now-ey). It has one breeding partner for its entire life unless one Galah dies then a new partnership will be formed.

Throughout the text in this brochure traditional names and places of the Dja Dja Wurrung language are noted in brackets next to the common name.



Lesser Long Eared Bat © Rob Watkins

BATS (KNUNAR-KNUNMYTCH)

Bats are mammals that fly using membranes of thin skin that extend between the fingers to the hind limbs and often to the tail. Their five toes each have a curved claw. Together their toes make a hook for hanging upside down, a comb for grooming the fur when roosting and a rake for capturing fish or aquatic insects. All small bats have little eyes, short snouts and large ears.

Just on dusk you may see a bat flying above and around the tree canopy. You may think it is a bird or a large moth. Bats fly around at night using ultrasonic calls to navigate and to find food. They send out high-pitched sounds that echo back and tell them that there is an object of food nearby. If you listen at night you can hear some bats using their echolocating noises. During the day bats roost in many different places, you may find them under bridges, in caves or old disused mines, in churches, hollow trees, in folds of bark, in roof spaces and maybe in cupboards!

WATER-RAT (CO-LE)

Water Rats have been seen at some of the local lakes in Bendigo. This animal is an Australian native rodent, which is sometimes confused with the introduced Black Rat. The Water Rat can be distinguished from the Black Rat by the white tip on the end of its tail and its love of swimming. Water Rats sleep through the middle of the day and most of the night in a nest at the end of a burrow dig in the bank of a creek or Lake (burr). Hunting after dawn and at dusk, Water Rats feed on crabs, crayfish, frogs, small tortoises, mussels, young aquatic birds and large insects caught in the water. Water Rats have partially webbed feet, which make them excellent swimmers under and on the water.



Water Rat © Lochman Transparencies



Common Blue-Banded Bee © John Grylls

AUSTRALIAN BEES (MOOM-OOM-BARAR)

Two native bees can be found in the local area. The Common Blue-Banded Bee has pale metallic blue bands on its abdomen. Males and females can be distinguished by counting the bands, males have five and females have four. Their flight patterns can alter from a fast-and-ankry style to a dart-and-hover style. Males sometimes group together for the night by hanging on to fine stems or leaves by their jaws. The female digs a burrow often in soft decomposing sandstone. At the end of the tunnel is an 8mm wide oval shaped cell within a multi layered waterproof shell. Each cell holds a liquid mixture of nectar and pollen and the egg.



Chequered Cuckoo Bee © John Grylls

(Dollin, Anne., Batley, Michael., Robinson, Martyn. & Faulkner, Brian. 2000. Native Bees of Sydney Region. A field guide. Australian Native Bees Research Centre.)



Blue Faced Honeyeater © Ian Maittgomery birdway.com.au

THE BLUE FACED HONEY EATER

The Blue faced Honeyeater can be found throughout Bendigo's parks, gardens and bushland. This large (30cms) robust honeyeater has a strong, curved bill, which it uses to forage on limbs, bark and foliage. It is a social bird,

that forages in feeding flocks of approximately seven, flocks of up to thirty honeyeaters has been recorded. They feed on insects, nectar and fruit from native and cultivated plants. The adult birds are most easily recognised by their distinctive blue patch around the eye. They are also one of the first birds heard in the morning, starting their piping call about thirty minutes before daylight.



One Tree Hill Lookout © Ryan Miles

ONE TREE HILL/GREATER BENDIGO NATIONAL PARK (D7)

One Tree Hill is in the heart of the city and is one of Bendigo's major natural setting recreation areas. The tree species consist of Red Ironbark, Red Box (Teering), Red Stringybark, Yellow Gum (Ban-napp), Grey Box (Boolerdj) and Long-leaf Box. In Spring, you will be charmed with some spectacular wildflower displays. Wildflower Drive takes you across the northern part of this section of the park, from McIvor Highway through to Strathfieldsaye Road. In winter, flowering eucalypts support a number of honeyeaters, migrant and native birds in the forest.

How to get there: The southern part of the park can be accessed via Edwards Road or Spring Gully Road. Edwards Road takes you to the One Tree Hill Lookout, picnic areas and a 2km loop walking track. The lookout offers expansive views of the city and surrounding country.

RECREATION

PADDLE A CANOE

Many of the local lakes are used by local paddlers. These lakes include Lake Weeroona (D4), Lake Tom Thumb (C3), Lake Neangar (C3) and Kennington Reservoir (E5).

HAVE A PICNIC

There are numerous parks, gardens, bushlands and playgrounds for any locals or visitors to enjoy their lunch in the setting of their choice. See recommended areas shown on the map.

CULTURAL HERITAGE

'From a distance the diggings seemed a vast yellow plain stripped bare, gouged into gravel pits and splashed with countless mounds of yellow clay, as if an army of grave diggers were at work. Everywhere were men tossing up the earth, shovelling it into barrows or dishes and hastening with it to the creek...the cradles rocked and rattled and scraped and the water from them turned the ground into squelching slush but nobody cared...back from the creek tents covered the slopes of the hills in a spreading sea of canvas and calico.' (Cusack)

Such was the scene of alluvial mining on the Sandhurst goldfields in the early 1850's as described by Frank Cusack in Bendigo a History (1973).

Today, evidence of gold mining can be found at Victoria Hill Historic Reserve and Diamond Hill Historic Area.

VICTORIA HILL HISTORIC RESERVE (C5)

The Ironbark forest once covering this hill soon gave way to shafts and crushing batteries once gold (kara kara) was discovered here in 1854. By 1861 Victoria Hill had yielded so much gold that it was considered the richest quartz (bayt) reef in the world. This outdoor gold mining museum contains the partially filled remains of one of the earliest open cut mines in Bendigo. The site is interpreted by signage as you walk around the tracks. You'll find this site opposite the Gold Mines Hotel in Marong Road. Take time to visit and absorb some of the areas history.



DIAMOND HILL HISTORIC AREA (C7)

By 1853 Diamond Hill and surrounding gullies were thickly populated by some 8000 German diggers with gold fever. Alluvial mining in places stripped the earth surface to bedrock. Some areas today show evidence of such practices and the vegetation has largely been unable to regenerate on such exposed bedrock. When the alluvial gold ran out, deep shafts were sunk in attempts to mine gold-bearing quartz reefs. By the 1860s a thriving township had developed - shops, hotels, post office, gold office, police station, brewery, Cobb and Co. livery stable and many slab or stone miner's cottages dotting the surrounding slopes. A school and a chapel were also built. This reflected a prosperous and permanent settlement. However; a number of problems, including a lack of permanent natural water supply and the collapse of the colony's economy in the 1890s led to decline. Gradually the shops and hotels closed down and cottages were either relocated or left to fall apart.

As the forest regenerates, the ruins of former human endeavours have been overrun by Ironbark and Box eucalypts with a rich understorey of wildflowers. The area also provides significant habitat for native fauna.

WALK OR RIDE THE TRAILS

Bendigo Bushland Trail

This trail consists of bicycle and walking tracks as well as some road tracks. It encircles the urban area of Bendigo and covers a total distance of 65km. Rex' the echidna will guide you. Just follow the blue and gold sign posts. This trail goes through pockets of remnant Box-Ironbark regrowth. Look carefully for animal tracks on tree trunks, trail tracks and on ants nests. You may even be lucky enough to see a kangaroo (goo-ra) or black wallaby (Jhin-bong-goo-re) bound past. A possum (bun-nar) may be roosting in a shrub or tree or even in the Dodder Laurel, a vine that tends to strangle the plant it grows over. Most of our native animals are nocturnal, in that they only come out at night. (See map legend on Bendigo Bushland Trails.)

Mulga Bill Bicycle Trail (C2)

"Twos Mulga Bill, from Eaglehawk who caught the cycling craze..." (Banjo Paterson)
The Mulga Bill Bicycle Trail connects Lake Neangar in central Eaglehawk to Lightning Hill Lookout in the Greater Bendigo Regional Park. This well formed trail is short, but it takes you to a lookout with magnificent views of Eaglehawk and Bendigo as well as the large area of forest to the north that is part of the Whipstick sector of the Greater Bendigo National Park.

O'Keefe Rail Trail (E4)

This linear trail is a disused Railway line that links the centre of Bendigo to the township of Axedale. There are no steep hills as such and it is considered to be a leisurely walk on sandy gravel with several creek crossings. This shared walking, cycling and horseriding trail is 19km one way and takes approximately 5.5 hours to walk and 3 hours to cycle. There are places to picnic along the way in the diverse Yellowgum woodland which includes wildflowers and orchids blooming in Spring. There is plenty to see at the old train stations along the trail and there are many native grasses found in the Axedale cemetery.

Bendigo Creek Linear Trail (D4)

From Rosalind Park the trail heads north along the Bendigo Creek to the Epsom Primary School. Its surface is bitumen and the trail is a shared walking/cycling path. Lake Weeroona, Botanic Gardens White Hills and White Hills cemetery are points of interest along the way.

The Great Dividing Trail

This trail can be accessed via the Railway Stations in Bendigo, Castlemaine, Daylesford, Creswick, Ballarat, Blackwood and Bacchus Marsh. The Bendigo to Castlemaine link is known as the Leanganook Track, the Dja Dja Wurrung name for Mt Alexander. It is 58km long and follows the water channel from Malmesbury to Bendigo for much of the route. The track can be walked and passes through a series of Box-Ironbark parks and reserves. Maps can be purchased from the Visitor Information Centres, Parks Victoria and Department of Sustainability and the Environment offices. (See map legend on Bendigo Bushland Trails.)

Woodvale Trail (B2)

This linear walking and cycling trail lies on the northern side of Woodvale Road. It starts at the Eaglehawk North Primary School and finishes at the Woodvale Recreation Reserve.

OTHER INTERESTING CULTURAL HERITAGE SITES ARE...

Lake Neangar (Dja Dja Wurrung meaning resting place) (C3)

The Lake was developed as an area for water sports for Eaglehawk residents in 1883. Regattas were held on a regular basis and were known as Eaglehawk's Henley. Fireworks displays and decorated crafts were often a feature of these celebrations.

The lakeside reserve originally had a carriageway around the perimeter and evening promenades were a feature of the early days. Century Old Sugar Gums are an imposing presence at one end of the lake and provide roosting sites for hundreds of lorikeets (kul-ling-er), cockatoos (djinup/cacatu), galahs and rosellas. Often seen at the lake are many native waterbirds, including pelicans (bar-rang-gul), cormorants, swans (koon-oo-worra), seagulls, little grebes (koo-ra-noo-ra) and native ducks (knun-nuck). The path around the lake is sealed and lit up at night. The picnic area has a shelter, boardwalk, tables and chairs, barbecue and children's playground.



Lake Weeroona (Dja Dja Wurrung meaning tranquil) (D4)

This artificial lake was constructed in 1869. It's surrounded by well-formed promenades and walks. It became a popular leisure retreat with bathhouses and a caretaker's residence amongst large shady trees. Around the turn of the century, competition between Lake Weeroona and Lake Neangar prompted rivaling rowing regattas. A new pavilion bathhouse was built in 1985. Today the lake provides an ideal setting for a stop-over on a trip heading north. There are picnic tables and chairs, a boardwalk and barbecue facilities under large shelters. The Bendigo Creek Linear Trail follows a bitumen path to Rosalind Park along the western side of the lake.



Chinese Joss House (D4)

Built in the 1860s, this place of worship was constructed of hand-made bricks and marks the site of a large Chinese settlement from that era. The National Trust now owns the building that is open to the general public. It continues to function as a place of worship for Chinese residents and as a tourist attraction for Bendigo.

Burke and Wills/Bendigo Cemetery (D6)

In the Bendigo cemetery there stands a monument to the tragic Burke and Wills expedition, which camped at Mia Mia, Knowsley and Barnadown within the City of Greater Bendigo. From the Shamrock Hotel, King delivered the news to the world that the expedition had been a complete failure and that he was the sole survivor.

The cost of the monument was borne by the citizens of Bendigo. This was ensured by stipulating that no one person should give more than one shilling.

The inscription reads, "Burke, Wills, Gray and King were the first to cross the continent of Australia. King alone surviving the privations and suffering under which his ill-fated companions sank".

Spring Gully Recreation Reserve and Linear Trail (D6)

This reserve is situated in a wonderful bushland setting that provides an environment that caters for the whole family. There are barbecues, picnic tables, toilets and plenty of room for the kids to run around. There is also a trail that begins at the Recreation Reserve that follows the Spring Creek to the Bendigo Linear Park. The walking track is bitumen from the Spring Gully Oval to Carolin Street.

FOR MORE INFORMATION AND OTHER BROCHURES ON THE BENDIGO OUTDOORS

Go to

- Bendigo Visitor Information Centre, at the Old Bendigo Post Office, 51-67 Pall Mall, Bendigo 3550. Or call (03) 5434 6060 or free call 1800 813 153.

- Heathcote Visitor Information Centre, in High Street in Heathcote (03) 5433 3121.
- Parks Victoria & Department of Sustainability and Environment - Bendigo Office located at: Corner of the Midland Hwy & Taylor St, Epsom or call the Department of Sustainability and Environment on (03) 5430 4444.

Websites

The Great Dividing Trail: www.gdt.org.au
The City of Greater Bendigo: www.bendigo.vic.gov.au
Parks Victoria: www.parkweb.vic.gov.au
Department of Sustainability and Environment: www.dse.vic.gov.au

Further Reading

- Bridley, Anne. (1991) Birds of the Bendigo District. Bendigo Field Naturalists Club (BFNC).
- Calder, M. (2002) Victoria's Box-Ironbark Forests. Victoria National Parks Association, Melbourne.
- City of Greater Bendigo & Bendigo Native Plant Group Inc. Indigenous Plants of Bendigo - A Gardeners Guide to Growing & Protecting Local Plants.
- Cleary, Jane & Leamon, Evelyn (1988) Wildflowers of Bendigo.
- Costermans, Leon. (1996) Native Trees and Shrubs of South Eastern Australia. Lansdowne Publishing.
- Cusack, Frank, Bendigo: A History; William Heinemann, Melbourne, 1973.
- Franklin, D. Linder, J. and Robinson, J. (1991). Eucalypts of the Bendigo District. (BFNC).
- Menkhurst Peter & Knight Frank. (2001). A Field Guide to the Mammals of Australia. Oxford.
- Morrison, Edgar. (1971) The Lodden Aborigines. Tales of Old Jim Crow.
- Or, Rodney. (1995) The Orchids of Bendigo. BFNC
- Shield, Jennifer. M. (2001) Spiders of Bendigo and Victoria's Box Ironbark Country. BFNC.
- Triggs, Barbara. (2002) Tracks, Scats and other Traces - A field guide to Australian mammals. Oxford University Press.
- Tully, John. (1988) Dja Dja Wurrung language of Central Victoria. Including place names.

Acknowledgements

This project acknowledges the co-operation and support from the National Indigenous Cadetship Program, The City of Greater Bendigo, Department of Sustainability and Environment, Parks Victoria, and La Trobe University Bendigo.

PARKS GARDENS & BUSHLANDS

The City of Greater Bendigo is almost entirely surrounded by National and Regional Park, which provides an unique setting and establishes Bendigo as a 'City within a Park'.

Many of Bendigo's parks and gardens were developed and maintained from the mid 1800's. Today we are fortunate to have these relaxing open spaces in addition to Box-Ironbark parks and forests within the urban area for everyone to enjoy on foot, by bicycle or in a car. This urban area, in turn, is surrounded by bushland and corridors that are easily accessed by local residents and visitors alike. Many of the gardens and bushland areas are linked by trails.



Rosalind Park



Cascades - Rosalind Park

Chinese Gardens

ROSALIND PARK (CBD inset)

This was the site of one of the largest government camps on Victoria's goldfields. The reconstructed poppet head on Camp Hill, above the Cascades, preserves the original function of the hill as a lookout. The base of this lookout is surrounded by mosaic tiles that tell a story. In 1862 Council decided to transform the area into a park close to the heart of the town. The park contains many mature shady trees making it cool and refreshing on a hot summer's day. Within the park there is also a large fernery, Conservatory Gardens, Cascades, Rotunda, stone-lined Bendigo Creek and three iron bridges providing access to the park from Pall Mall. The Cascades are lit up at night and provide a very pleasant venue on a summer's evening.

CHINESE GARDENS (CBD inset)

These colourful gardens complement the Chinese Dragon Museum and are situated near the start of the Bendigo Creek Linear Trail. The architecture and construction of the gardens are based on the Imperial Palace in Beijing.

CANTERBURY PARK GARDENS (C3)

These gardens and the associated Lake Neangar (resting place) Reserve, form an important part of Eaglehawk's landscape heritage. Five acres were set aside in 1870, later increasing to 35 acres with the inclusion of Lake Neangar Reserve in 1883. Most of the large conifers and palms date from the earliest days of the gardens although there were many more at the time. In 1873, trees were sent from the Melbourne Botanic Gardens by Baron Von Mueller, the renowned Government botanist. In recent times the park has been noted for its display of dahlias in conjunction with the Eaglehawk Dahlia & Arts Festival held each year in March.

BENDIGO FIELD NATURALIST CLUB GARDEN, GOLDEN SQUARE (C5)

The BFNC has established an indigenous wildflower garden around their clubrooms. This contains garden beds full of local native plants that anyone can grow in their garden at home. The garden is low maintenance as it has been heavily mulched with newspaper and 'eucy' mulch. It requires no watering, fertilizers or weed killers.

KENNINGTON RESERVOIR/STRATHDALE PARK (E5)

This expansive reserve to the east of the city extends from McIvor Highway to Condon Street and most sections can be easily accessed from Reservoir Road. The southern end of the park includes the reservoir with picnic facilities, sealed walking track, Saltbush Garden and bird hide to view the many waterbirds that visit. Many waterbirds can also be seen near or among the reeds and rushes at the water's edge. The section to the north and below of the reservoir is Box-Ironbark bushland with the Grassy Flat Creek meandering through it. The area contains walking/cycling tracks for easy access. The northern section consists of well-developed sporting facilities, Waterwise Demonstration Garden, Wellington Gardens picnic area and a popular children's playground.

JACKASS FLAT NATURE CONSERVATION RESERVE (D3)

Entry to this reserve is gained via Crane Road or Prouses Road. This bushland contains stands of Ironbark, Red Box and Grey Box eucalypts, with gullies clothed in dense areas of Totem Poles, and Violet Honey-myrtle. Other understorey plants include Common Fringe-myrtle, Sticky Boronia, Fairy Waxflower, Goldfields Greivillea and many orchids. Some rare plants found here are Star-hair and Shrub Violet.

The Common Correa, and winter-flowering Ironbarks provide honeyeaters with sweet nectar for winter food. This is a good place for bird watching. A walking track through this reserve takes you through a remnant area of natural bushland that would have greeted the gold diggers of the 1850's.

All areas of bushland have been altered drastically in the past 150 years, but the plants that have regenerated provide the observer with a floral display of exceptional beauty, particularly in Spring.



Eastern Rosella © Rob Watkins

BOTANIC GARDENS, WHITE HILLS (E3)

The site for these Botanical Gardens was reserved by the Colonial Government in 1857. During 1861, the gardens were laid out, fenced and planted. The creek bed running through the land was transformed into an artificial lake. By 1870, six hundred blue gums and four hundred and forty three pine trees of various species had been planted, along with numerous other exotic trees. The gardens also included a hothouse, rotunda, a fine collection of over two hundred roses, and a zoo with monkeys, koalas and birds. Today a magnificent archway defines the entrance to the gardens which provide a cool and relaxing setting for family picnics and reunions away from busy roads and intersections. There are picnic tables and chairs, spacious lawns, mature pines and eucalypts, a small lake and a playground for the youngsters.



Bendigo Wax Flower © Gail Toverer

SALOMON GULLY NATURE CONSERVATION RESERVE (D6)

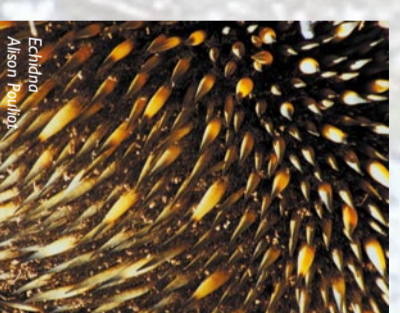
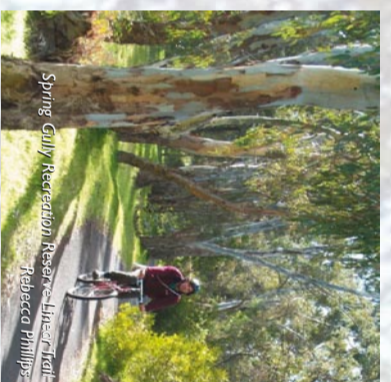
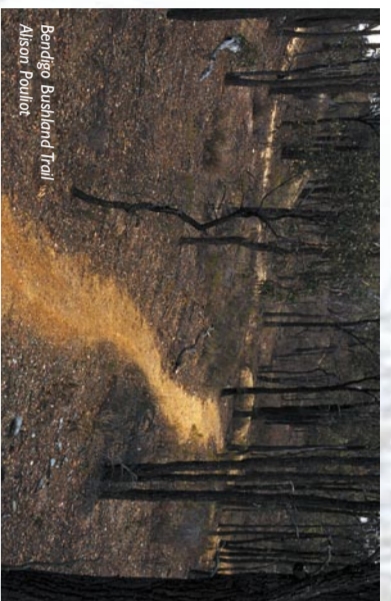
In Spring the slopes are ablaze with a showy display of wattles interspersed between the deeply furrowed black trunks of Ironbarks. The famous Bendigo Waxflower (or Fairy Wax) is found here in abundance, best seen flowering in September. Other plants include Silky Hakea, Totem Poles, Common Fringe-myrtle, peas and daisies. Silky Hakea exudes a beautiful smell of sweet nectar or honey while in flower in late winter. A 1.3km loop walking track meanders through the reserve, which is well worth a visit, particularly for the bird life and its floral display in spring.



Totem Poles © Gail Toverer

RECREATION WALK OR RIDE THE TRAILS

- Bendigo Bushland
- Bendigo Creek Linear Trail (D4)
- Diamond Hill Historic Reserve (C7)
- Local Lakes (C3, D4, E5)
- Mulla Bill Bike Trail (C2)
- Okeefe Rail Trail (E4)
- One Tree Hill Lookout (D7)
- Spring Gully Recreation Reserve Linear Trail (D6)



- ### URBAN WILDLIFE OBSERVE THE ANIMALS
- Bendigo Regional Park
 - Greater Bendigo National Park
 - Jackass Flat Nature Conservation Reserve (D3)
 - Local Lakes (C3, D4, E5)
 - Nature Conservation Reserves
 - White Hills Botanic Gardens (E3)

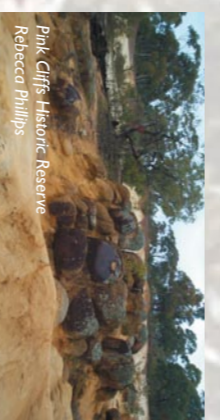


THESE BUILT-UP COMPANIES OF THE CITY OF GREATER BENDIGO TAKE NO RESPONSIBILITY FOR ANY INJURIES OR DAMAGE TO PERSONS OR PROPERTIES.

Ms Alexander Alison Phillips

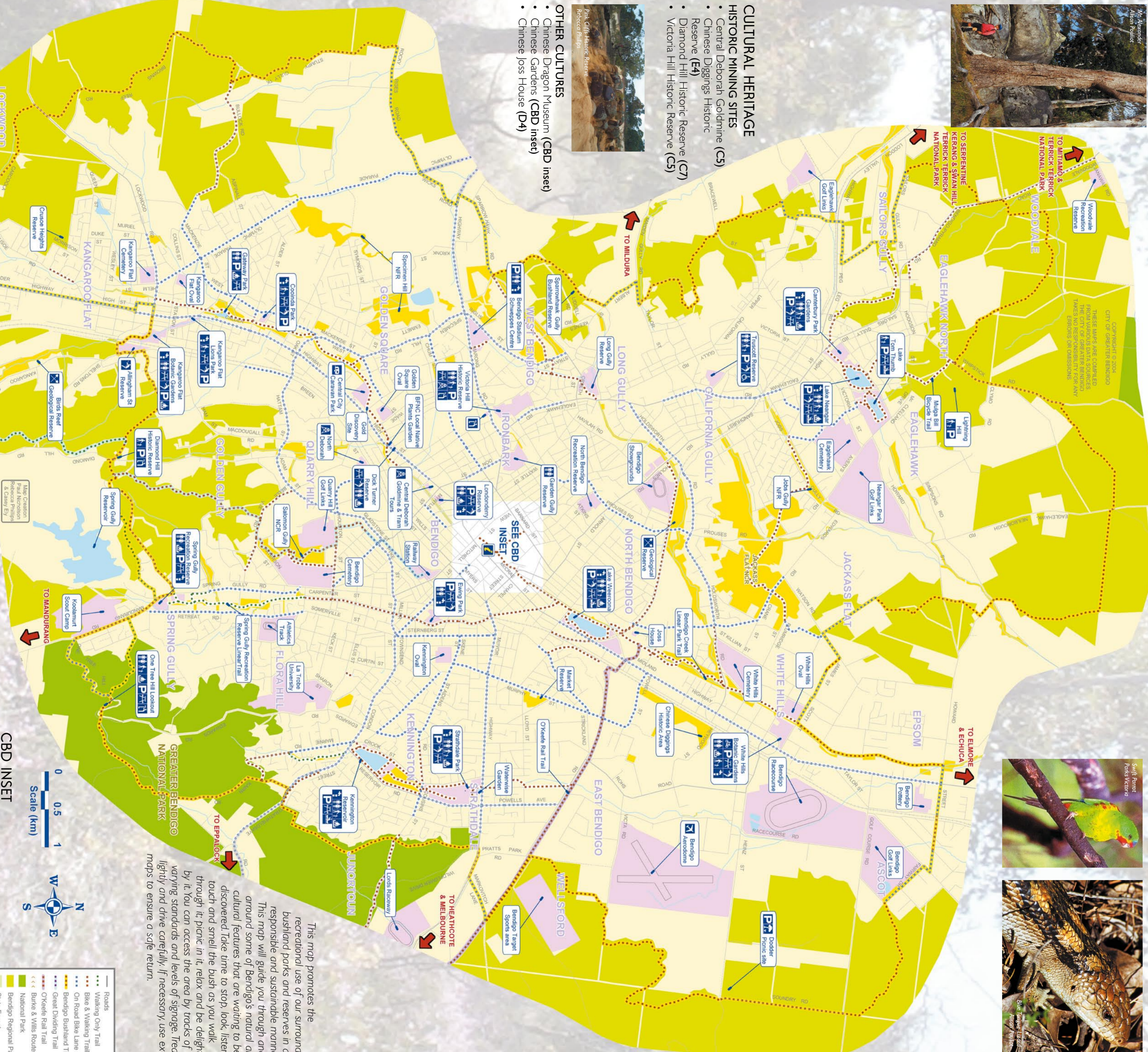
Swift Parrot Alison Phillips

Bull Antlion Larva Alison Phillips



- ### CULTURAL HERITAGE HISTORIC MINING SITES
- Central Deborah Goldmine (C5)
 - Chinese Diggings Historic Reserve (E4)
 - Diamond Hill Historic Reserve (C7)
 - Victoria Hill Historic Reserve (C5)

- ### OTHER CULTURES
- Chinese Dragon Museum (CBD inset)
 - Chinese Gardens (CBD inset)
 - Chinese Joss House (D4)



PARKS, GARDENS & BUSHLAND

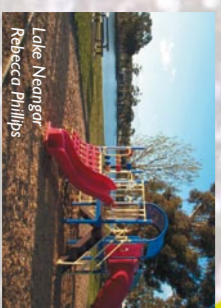
CBD INSET

- Roads
- Walking Only Trail
- Bike & Walking Trail
- On Road Bike Lane
- Bendigo Bushland Trail
- Great Ditching Trail
- Okeefe Rail Trail
- Burke & Willis Route
- National Park
- Bendigo Regional Park
- Site of Interest
- Nature Conservation & National Park Reserve
- Site Forest
- Bendigo Regional Park
- B&B
- Picnic Area
- Water
- Geological Site
- Walking Trail
- Bike Track
- Caravan Park
- Information Centre
- Camping Ground
- Rest Area
- Horse Riding
- Canoeing
- Fishing

This map promotes the recreational use of our surrounding bushland parks and reserves in a responsible and sustainable manner. This map will guide you through and around some of Bendigo's natural and cultural features that are waiting to be discovered. Take time to stop, look, listen, touch and smell the bush as you walk through it, picnic in it, relax and be delighted by it. You can access the area by tracks of varying standards and levels of signage. Treed lightly and drive carefully. If necessary, use extra maps to ensure a safe return.

PLAY ON THE PLAYGROUNDS

- Botanic Gardens White Hills (E3)
- Canterbury Park Gardens (C3)
- Coolinda Park (B6)
- Londonderry Picnic Area (C5)
- Kangaroo Flat Lions Park (B6)
- Strathdale Lions Park (E5)



VISIT THE LOCAL LAKES

- Lake Neangar (C3)
- Lake Weeroona (D4)
- Kennington Reservoir (E5)
- Lake Tom Thumb (C3)



RELAX IN THE GARDENS

- Coolinda Park (B6)
- Ewing Park (D5)
- Kangaroo Flat Botanic Gardens (B6)
- Rosalind Park and Fernery (CBD inset)
- Strathdale Park (E5)

